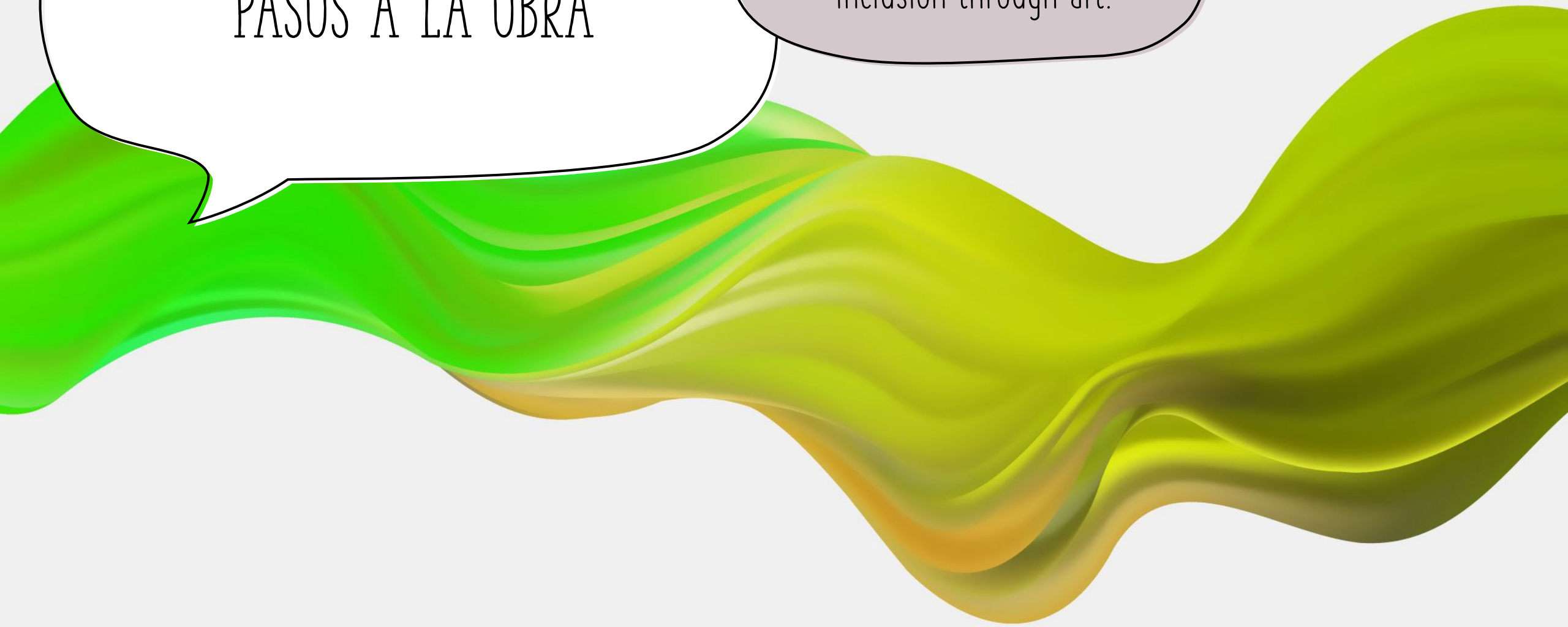


PASOS A LA OBRA

A different approach to creating inclusion through art.



A photograph of an artist's workspace. In the center, a silver tin can is filled with various paintbrushes of different sizes and colors. To the left, a palette with various colors of paint is visible. In the foreground, there are several tubes of paint, some of which are squeezed and used. The background is a blurred, colorful wall. A white speech bubble with a black outline is positioned on the left side of the image, containing the text "INCLUSIVE TRAVELING ART WORKSHOPS".

INCLUSIVE TRAVELING
ART WORKSHOPS



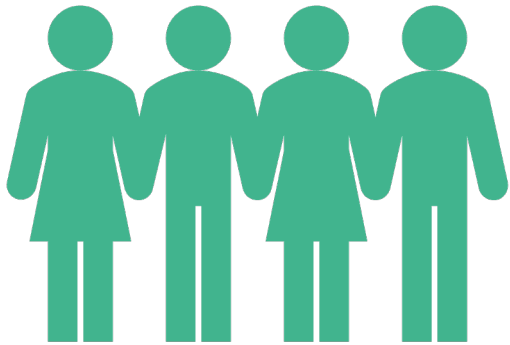
MEXICO

There are many challenges to approaching the inclusion of people with disabilities.

GOAL:

Create and live together magic moments between children, using arts as a way of connection.

COMMUNITY



Spaces and encounters that reinforce the
idea of belonging


ART AS A LANGUAGE

THE WAY OF COMMUNICATION IN ARTS DOES NOT
NEED SPECIFIC INTERPRETATION; IT IS MORE FLEXIBLE
AND INTERPRETATIVE.

DOESN'T REQUIRE A PREDETERMINED CODE.

LANGUAGES OF ART

IT OFFERS US DIFFERENT WAYS OF EXPRESSION.



IT IS NOT A REHAB PROCESS

We offer an exchange where there is a being with a different condition with something different to say.

We modify the context to give transcendence to that VOICE that is unheard.

"Art as a human event is a natural producer of singularities, differences and diversities at the service of enrichment"

Fernando A. Stern

THREE IMPORTANT ASPECTS TO CONSIDER IN INCLUSION:

- THE APPROACH TO THE CULTURE AND ART
(architectural and social barriers)
- THE ARTISTIC DEVELOPMENT OF THE PERSON WITH DISABILITIES
- AWARENESS-RAISING AND INCLUSION THROUGH ART AND CULTURE

THE IMPORTANCE OF PLAYING

The playless history of most young people and children with disabilities.

Absence of confidence and creative capacity of the children with disabilities.

"Art as a vehicle for transmitting emotions and sensations builds, like play, a bridge between the real and the imaginary."

Fernando A. Stern

A cultural and social approach based on creating a symbolic universe that walks through the individual experience to the social experience.

There is an integrative function in the art.

ART AND EDUCATION

Art is a practice that allows a relationship with the environment.

Its role is used to facilitate unusual discourses and new cultural experiences.

Art increases educational and social inclusion.

Leaving the institution, and exposing it, reveals the meaning it has for people, capturing with your own head and your own hand's objects that admit a subsequent resignification in terms of social exchange.



"Art is not a thing; art is a path."

Elbert Hubbard

